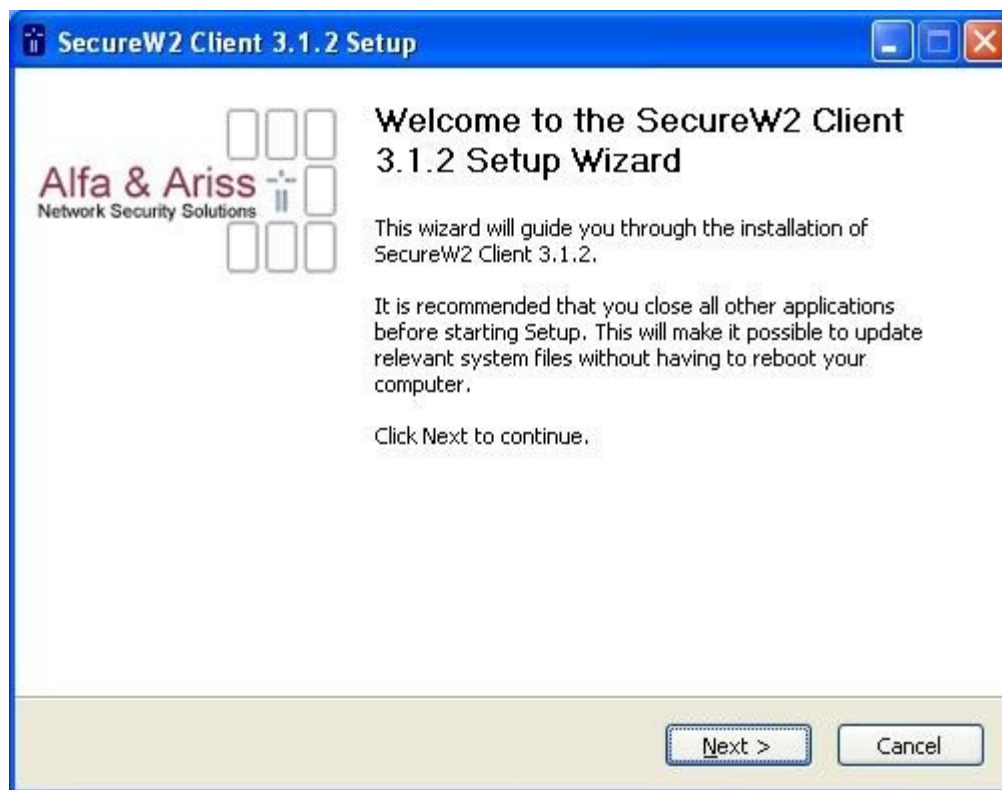


Configuration of 802.1X for Eduroam

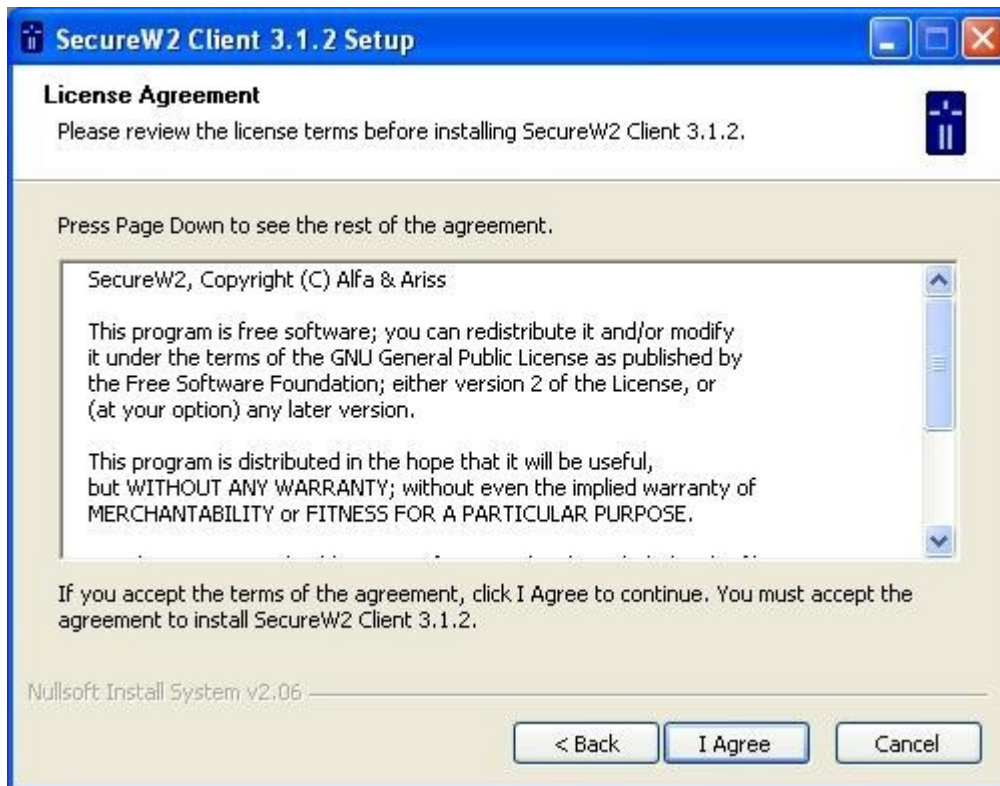
I. Windows XP

To use Eduroam you need to have a supplicant installed on your computer. In this tutorial SecureW2 (which can be found at ICFO website) will be used but any other will work if properly configured.

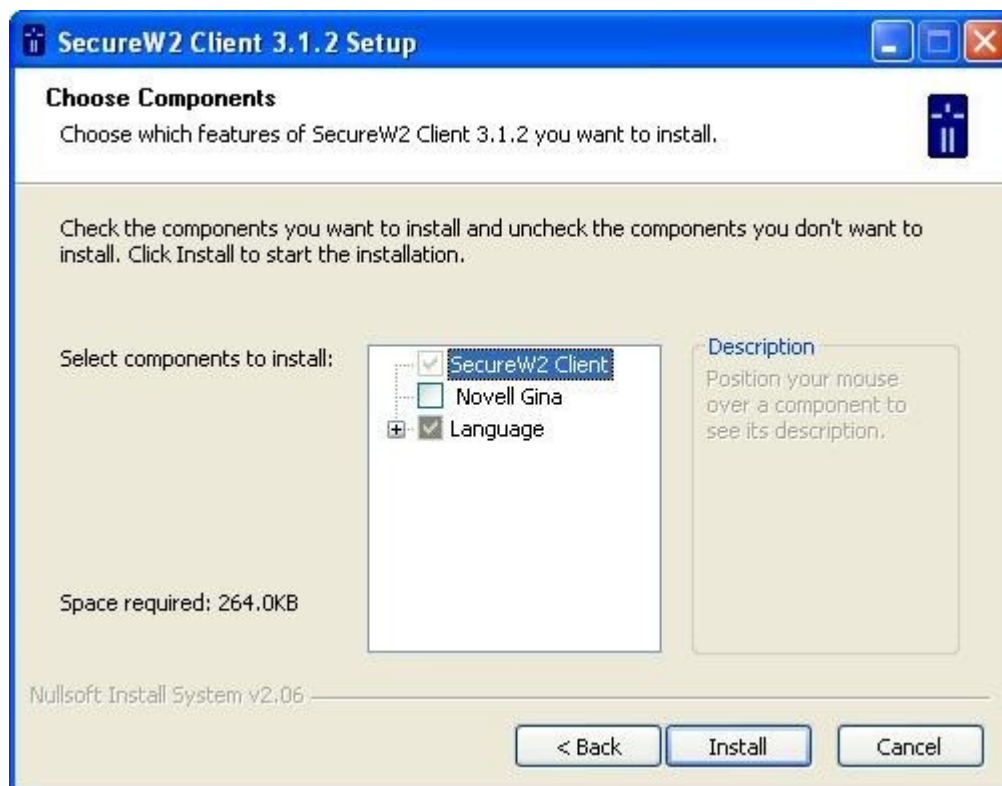
Once downloaded, execute the file.



Click << Next >>.



Click << I Agree >>.

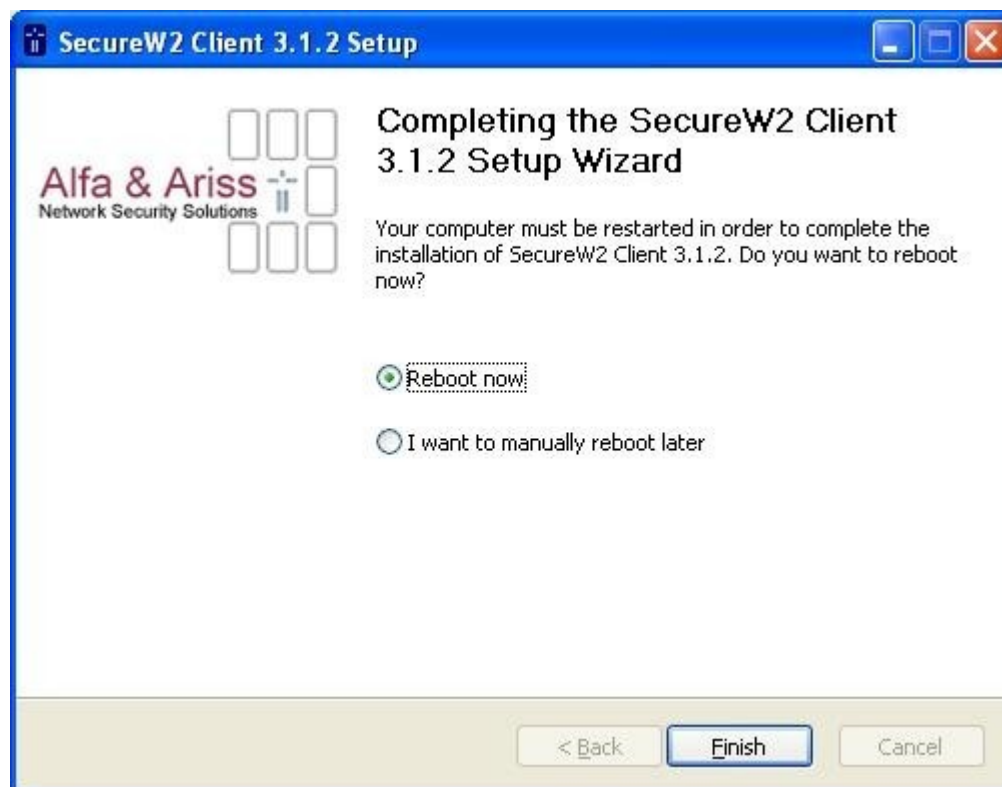


Click << Install >>.



The image shows a Windows dialog box titled "SecureW2 - PreConfigure". The title bar includes the Alfa & Ariss logo and a close button. The main content area has the Alfa & Ariss logo and the text "Network Security Solutions" in the top right. Below this, it says "Please enter your credentials". There are five input fields: "Profile:" with "DEFAULT" selected, "Username:" with "example@icfo.es", "Password:" with four dots, "Re-enter Password:" with four dots and a cursor, and "Domain:" which is empty. At the bottom right are "OK" and "Cancel" buttons.

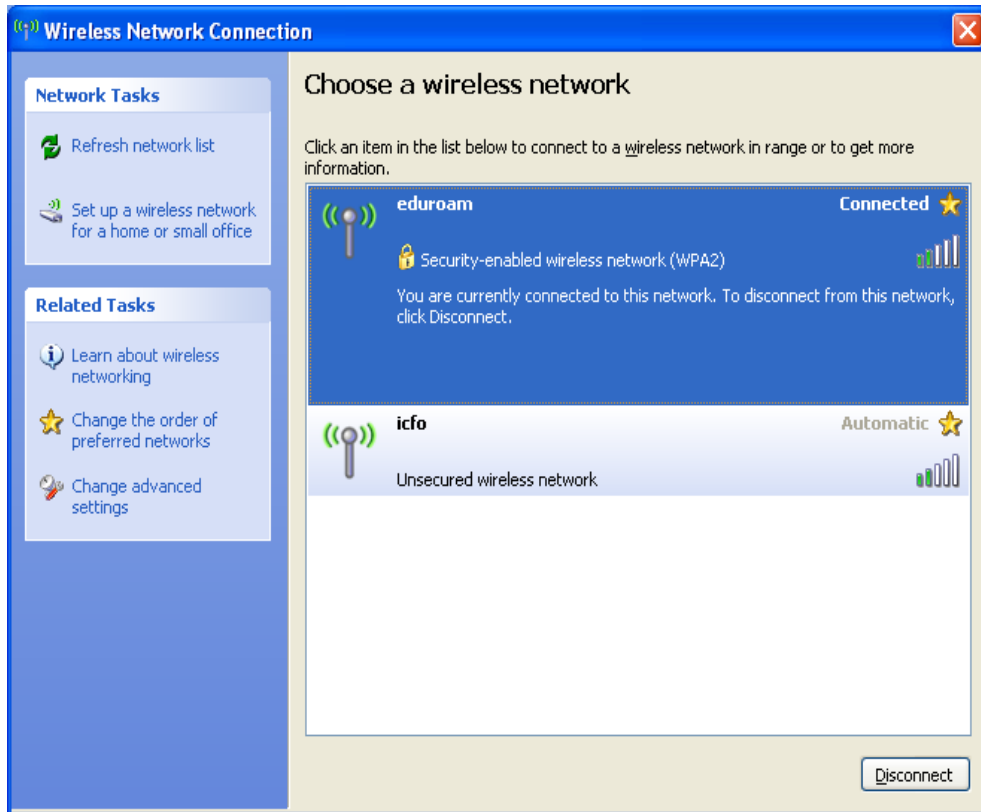
Enter your credentials and click << OK >>.



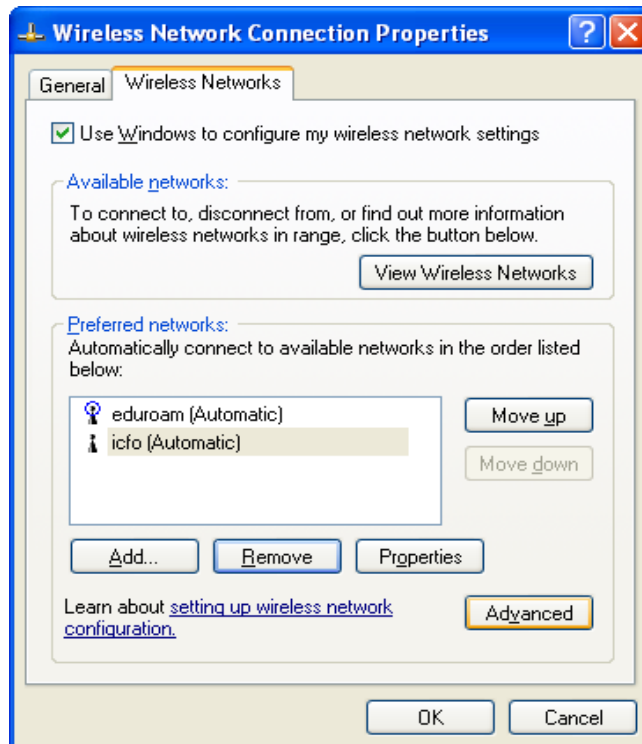
The image shows a Windows dialog box titled "SecureW2 Client 3.1.2 Setup". The title bar includes the Alfa & Ariss logo and window control buttons. The main content area has the Alfa & Ariss logo and the text "Network Security Solutions" on the left. On the right, it says "Completing the SecureW2 Client 3.1.2 Setup Wizard". Below this, it asks "Your computer must be restarted in order to complete the installation of SecureW2 Client 3.1.2. Do you want to reboot now?". There are two radio button options: "Reboot now" (which is selected) and "I want to manually reboot later". At the bottom are "< Back", "Finish", and "Cancel" buttons.

Click << Finish >> to reboot your computer.

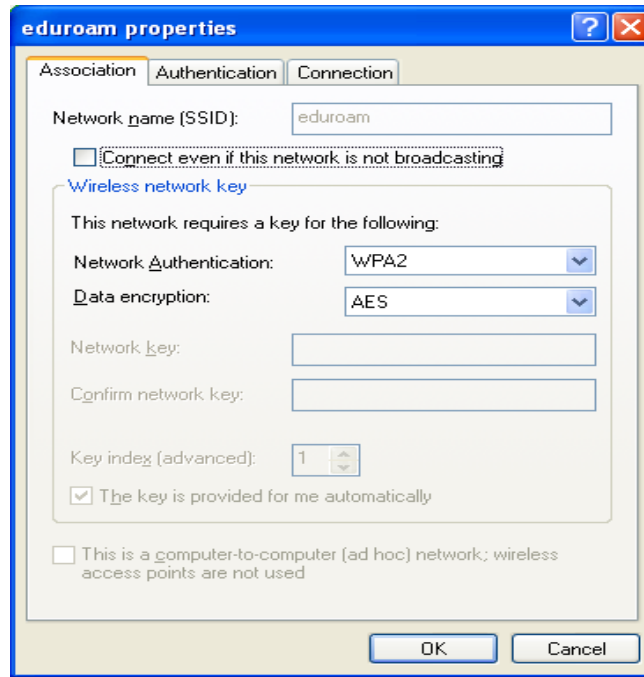
Once you have the software installed on your computer you can connect to Eduroam.



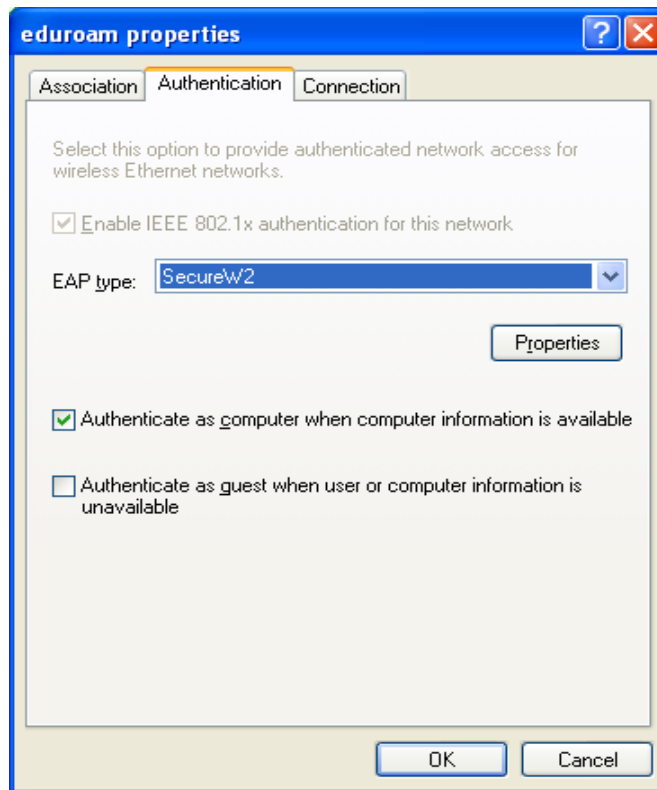
Click << Change advanced settings >>.



Click << Properties >> to configure Eduroam:



On the Authentication tab choose SecureW2:



Click << Properties >> to select PAP:

II. Ubuntu 9.04

Configure the native network manager accordingly with the following settings:

Editing eduroam

Connection name: eduroam

Connect automatically

Wireless | Wireless Security | IPv4 Settings

Security: WPA & WPA2 Enterprise

Authentication: Tunneled TLS

Anonymous Identity: anonymous@icfo.es

CA Certificate: (None)

Inner Authentication: PAP

User Name: obardes

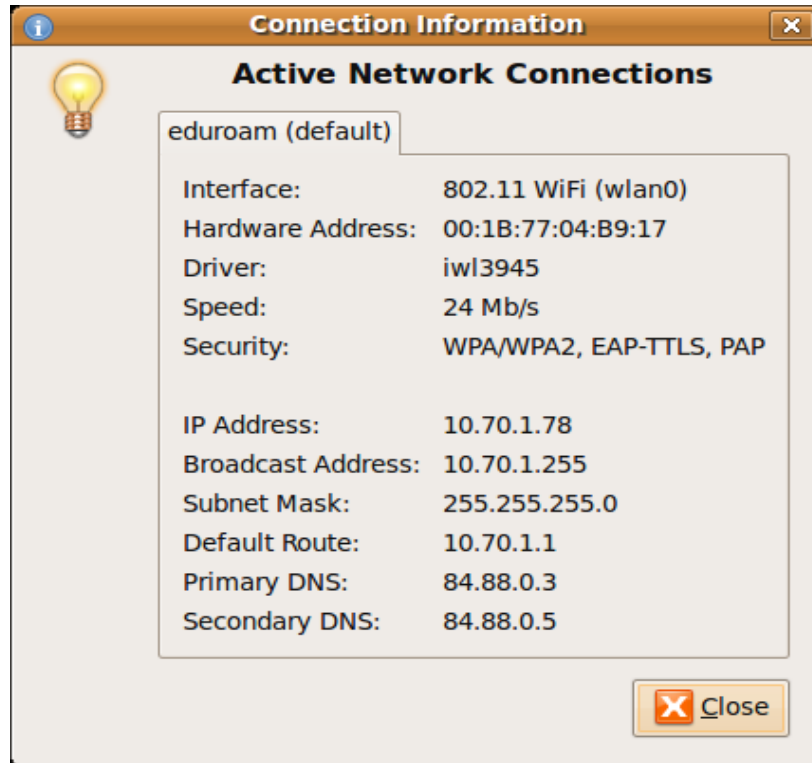
Password: ●●●●●●●●

Show password

Available to all users

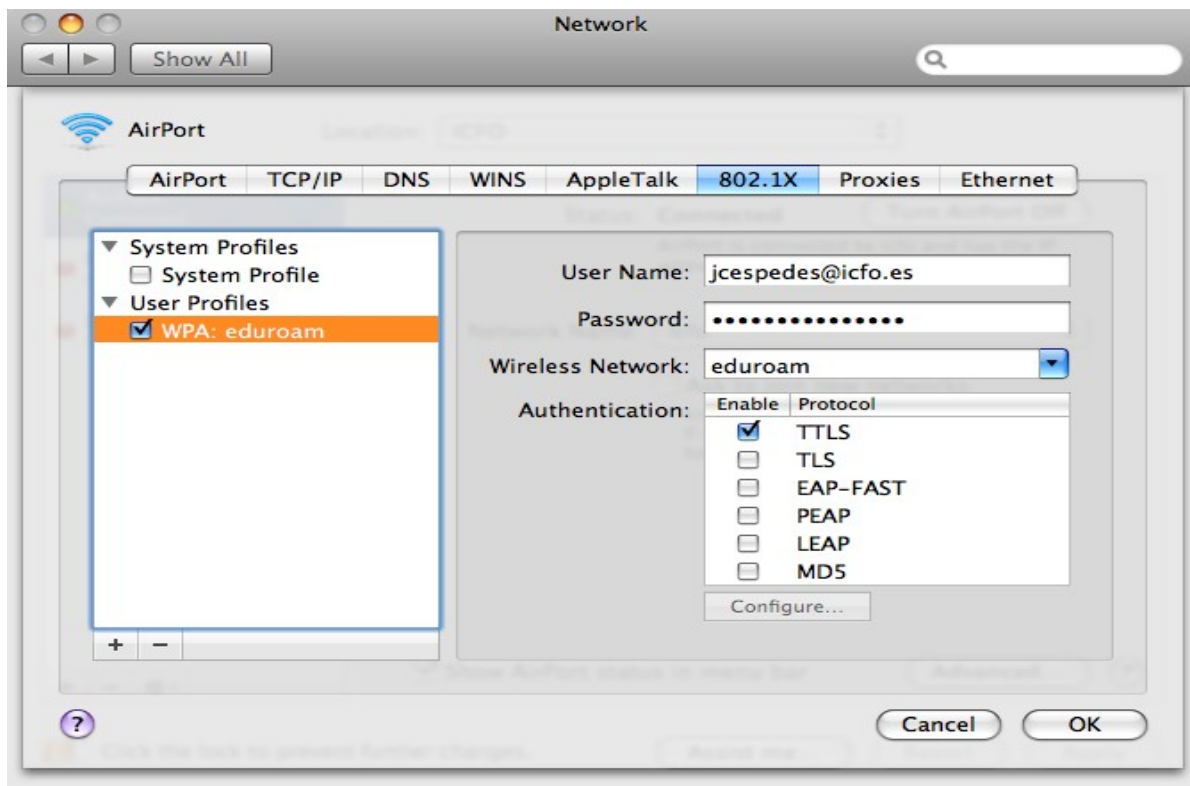
Cancel Apply

With the settings above you should get connected to Eduroam:



III. Mac Leopard

The airport must be configured as follows:



And click << Configure >> to enter your credentials:

